

Pathologists' Assistant

Locum Tenens Coverage



Doris Schuler-Maloney, MS, PA(ASCP)^{CM}

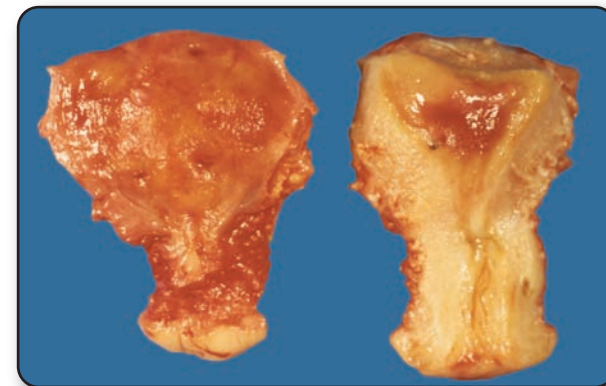
Benefits of Using Locum Tenens PA Help

- Keeps permanent staff happy !
- Allows permanent staff to concentrate on their work
- Maintain work volume with less disruption of workflow
- Provides continuity of service for planned or unplanned staff absences or temporary high volume times
 - ✓ vacation
 - ✓ continuing medical education
 - ✓ maternity leave
 - ✓ medical leave
 - ✓ while recruiting
 - ✓ waiting for new hire to start
 - ✓ cover PA working on other assignments (LIS, LEAN, etc.)
 - ✓ help cover high volume/busy times without commitment of FTE



Why DSM PathWorks?

- Contract directly with person doing the work
- Reasonable base rates
- Establish ongoing working partnership or one-time coverage
- Schedule well in advance, or
- May be available with limited notice



Services Available

- Surgical pathology - gross description, dissection, section selection and submission, gross photography, special studies
- Autopsy pathology - infant, pediatric & adult; chart review, gross exam, evisceration, gross photography, prosection, brain removal, section selection and submission, gross description, provisional anatomic diagnosis
- Administrative - procedure manuals, inspection readiness, training
- Full time
- Part time
- Weekends

Flexible to accommodate your needs.

Call or email to learn more.

Doris Schuler-Maloney, MS, PA(ASCP)^{CM}
Independent Contractor - PA Locum Tenens

DSM PathWorks, Inc.
16621 60th Avenue
St. Charles, IA 50240

515-249-1605 mobile
515-309-2921 home office

palocum@dsmwebworks.com
www.palocum.com



DSM PathWorks, Inc.
Independent Contractor

St. Charles, Iowa

515-249-1605

palocum@dsmwebworks.com





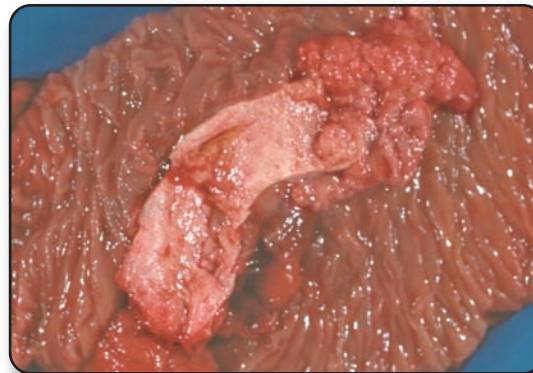
*Doris
Teaching
circa 1993*

“Organ
Recital”

*discussing
myocardial
infarction
with
students*

Professional Accomplishments

- Organized, detail oriented and able to focus to provide high volume, high quality work
- Resource person for pathologists and anatomic pathology staff for specimen handling and grossing
- Developed gross room staff and procedures to ensure reliable superior product in atmosphere of patience and tolerance
- Developed expertise in placental gross pathology
- Wrote placenta textbook
The Placenta: To Know Me Is To Love Me
- Hold patent for *Placental Triage Kit (PTK)*
- Enjoy learning and sharing knowledge by mentoring, lecturing, presenting workshops and writing
- Three-time winner of American Association of Pathologists' Assistants *Newsletter Award*
- Recipient of American Association of Pathologists' Assistants *Distinguished Service Award*

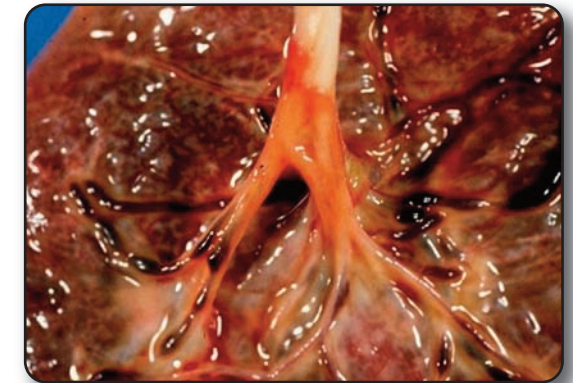


Pathologists' Assistant Locum Tenens Coverage

Call or email me to discuss your coverage needs and the help I can provide.

Doris Schuler-Maloney, MS, PA(ASCP)^{CM}

- 25+ years experience, at 800 bed community hospital with 33,000 surgical pathology cases and 50-100 autopsies per year
- Locum tenens experience in variety of institutions
- Pathologists' Assistant Training Program, University of Maryland at Baltimore
- M.S. degree in Pathology, University of Maryland at Baltimore
- ASCP Certified Pathologists' Assistant
- Current business and professional liability insurance coverage
- Independent contractor as DSM PathWorks



DSM PathWorks, Inc.
Independent Contractor - PA Locum Tenens
16621 60th Avenue
St. Charles, IA 50240

DSM PW
Path Works
PA Locum Tenens

515-249-1605 mobile
515-309-2921 home office

palocum@dsmwebworks.com
www.palocum.com

Why Doris?

- Over 25 years experience as a Pathologists' Assistant, in large busy community hospital (800 beds; annual department volume, 33,000 surgicals/50-100 autopsies).
- Highly skilled grossing wide variety of simple to complex specimens, and performing autopsies from gross exam to PAD.
- Expertise in placenta, large bowel, gynecologic and breast gross pathology, and other cancer cases. Well versed in congenital heart abnormalities.
- Provide quality sections, clear and concise dictation, comprehensive yet succinct descriptions and accurate tissue selection.
- Team player with commitment to pathologists and staff, contributing to outstanding care of the patient.
- Flexible, tolerant, and patient
- Fast learner of your systems
- Seamless integration into your workflow and pace